

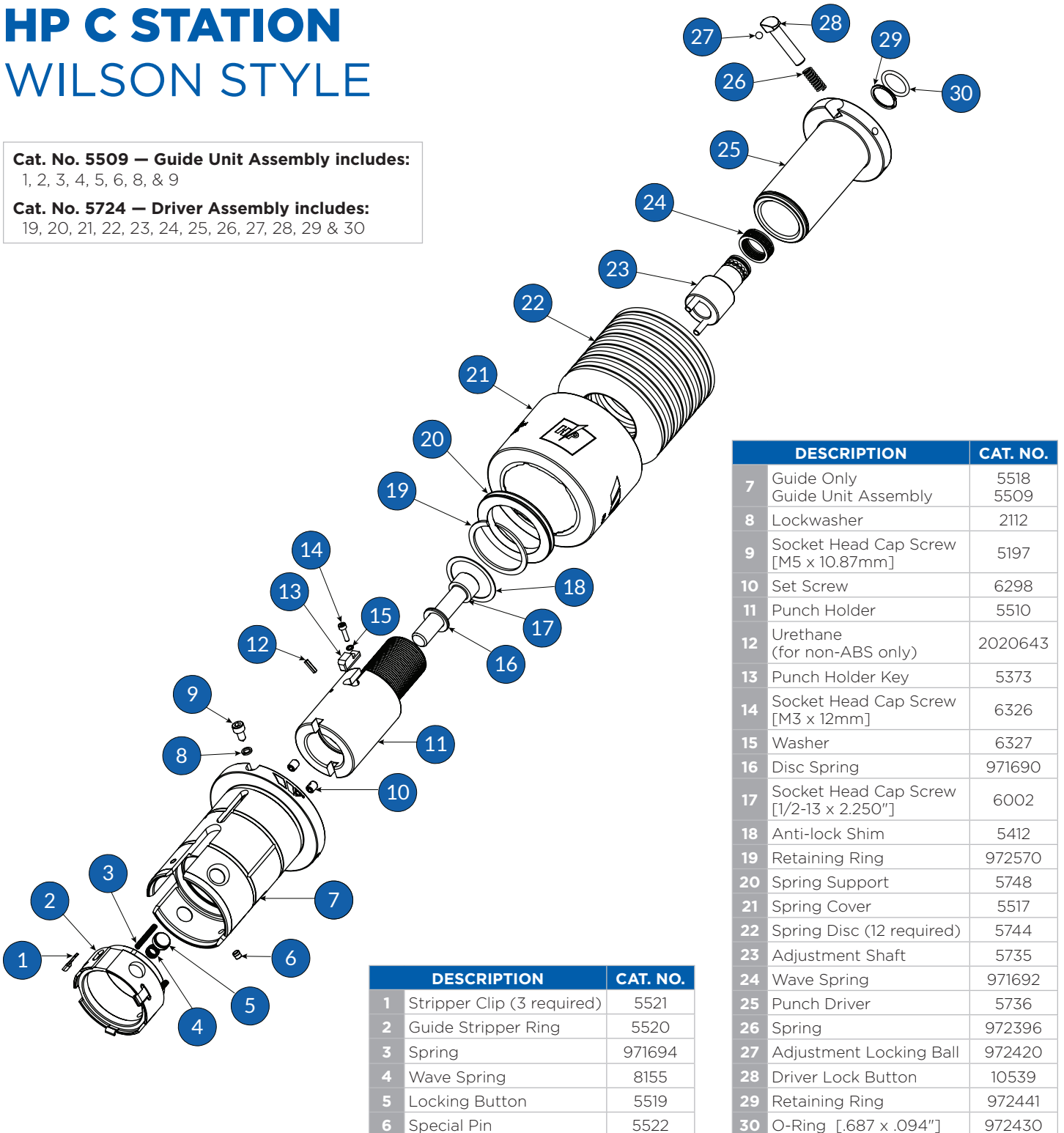
## HP C STATION WILSON STYLE

**Cat. No. 5509 – Guide Unit Assembly includes:**

1, 2, 3, 4, 5, 6, 8, &amp; 9

**Cat. No. 5724 – Driver Assembly includes:**

19, 20, 21, 22, 23, 24, 25, 26, 27, 28, 29 &amp; 30



	DESCRIPTION	CAT. NO.
1	Stripper Clip (3 required)	5521
2	Guide Stripper Ring	5520
3	Spring	971694
4	Wave Spring	8155
5	Locking Button	5519
6	Special Pin	5522

	DESCRIPTION	CAT. NO.
7	Guide Only	5518
	Guide Unit Assembly	5509
8	Lockwasher	2112
9	Socket Head Cap Screw [M5 x 10.87mm]	5197
10	Set Screw	6298
11	Punch Holder	5510
12	Urethane (for non-ABS only)	2020643
13	Punch Holder Key	5373
14	Socket Head Cap Screw [M3 x 12mm]	6326
15	Washer	6327
16	Disc Spring	971690
17	Socket Head Cap Screw [1/2-13 x 2.250"]	6002
18	Anti-lock Shim	5412
19	Retaining Ring	972570
20	Spring Support	5748
21	Spring Cover	5517
22	Spring Disc (12 required)	5744
23	Adjustment Shaft	5735
24	Wave Spring	971692
25	Punch Driver	5736
26	Spring	972396
27	Adjustment Locking Ball	972420
28	Driver Lock Button	10539
29	Retaining Ring	972441
30	O-Ring [.687 x .094"]	972430