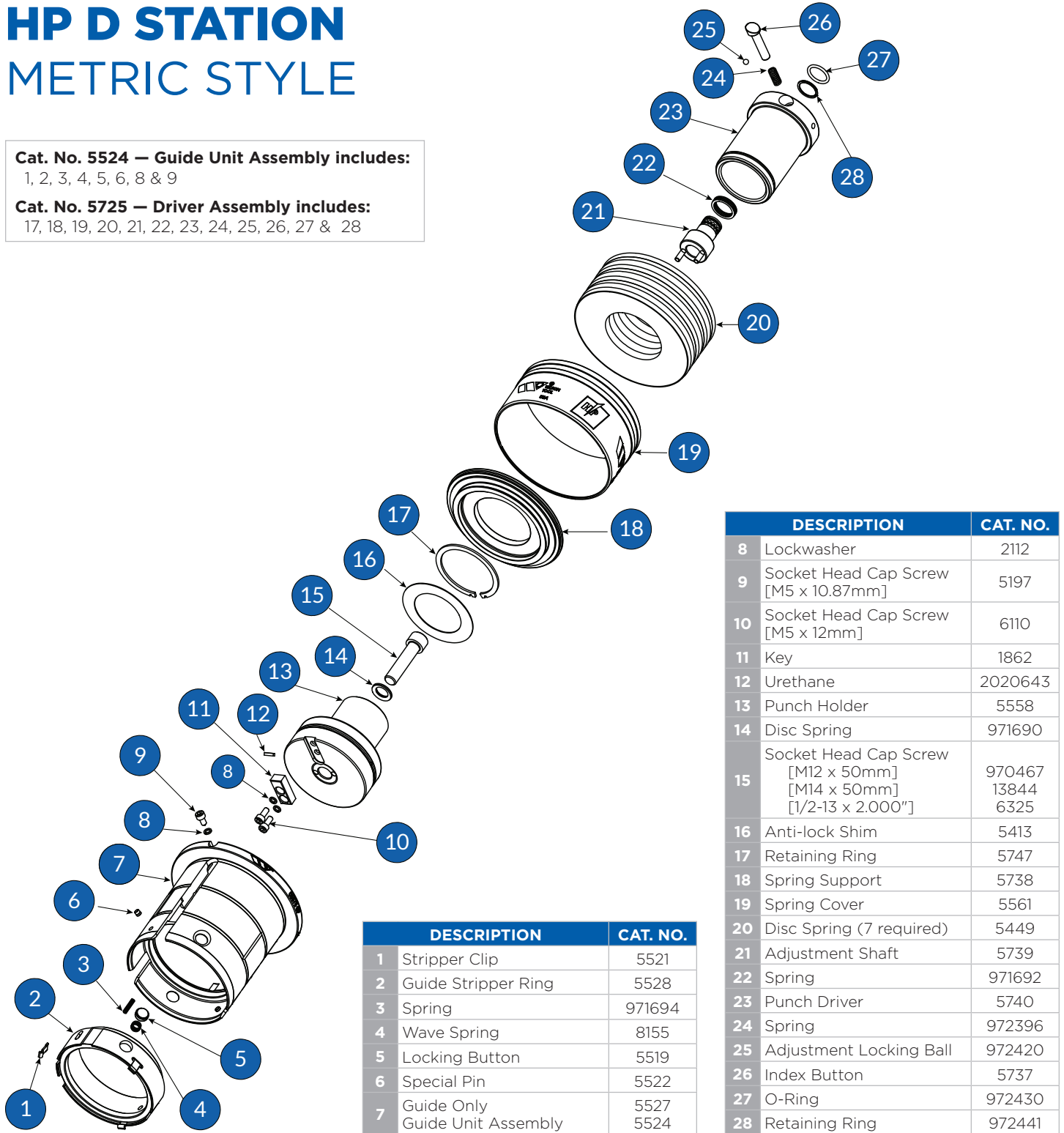


HP D STATION METRIC STYLE

Cat. No. 5524 — Guide Unit Assembly includes:
1, 2, 3, 4, 5, 6, 8 & 9

Cat. No. 5725 — Driver Assembly includes:
17, 18, 19, 20, 21, 22, 23, 24, 25, 26, 27 & 28



	DESCRIPTION	CAT. NO.
1	Stripper Clip	5521
2	Guide Stripper Ring	5528
3	Spring	971694
4	Wave Spring	8155
5	Locking Button	5519
6	Special Pin	5522
7	Guide Only	5527
	Guide Unit Assembly	5524

	DESCRIPTION	CAT. NO.
8	Lockwasher	2112
9	Socket Head Cap Screw [M5 x 10.87mm]	5197
10	Socket Head Cap Screw [M5 x 12mm]	6110
11	Key	1862
12	Urethane	2020643
13	Punch Holder	5558
14	Disc Spring	971690
15	Socket Head Cap Screw [M12 x 50mm] [M14 x 50mm] [1/2-13 x 2.000"]	970467 13844 6325
16	Anti-lock Shim	5413
17	Retaining Ring	5747
18	Spring Support	5738
19	Spring Cover	5561
20	Disc Spring (7 required)	5449
21	Adjustment Shaft	5739
22	Spring	971692
23	Punch Driver	5740
24	Spring	972396
25	Adjustment Locking Ball	972420
26	Index Button	5737
27	O-Ring	972430
28	Retaining Ring	972441