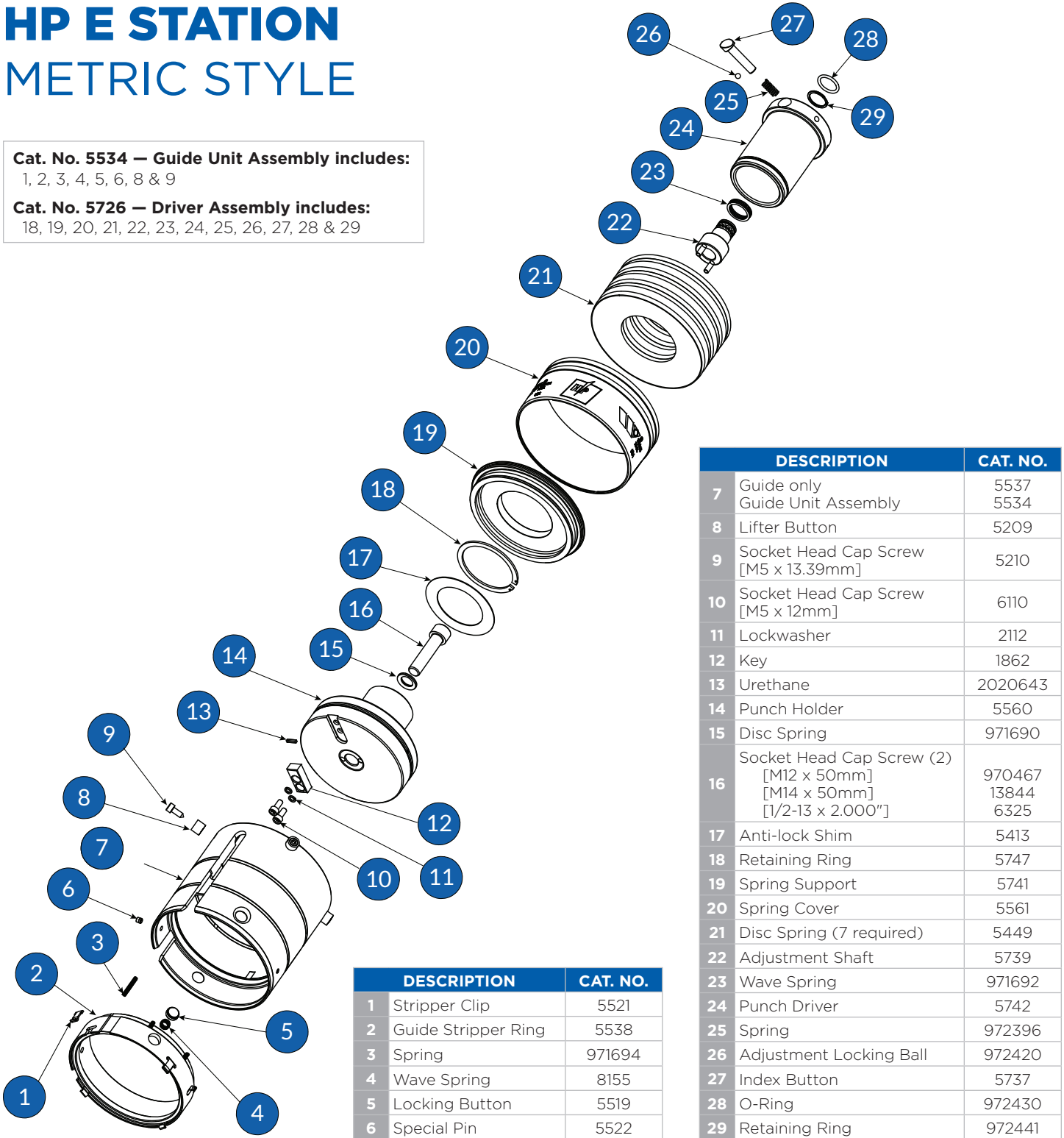


HP E STATION METRIC STYLE

Cat. No. 5534 — Guide Unit Assembly includes:
1, 2, 3, 4, 5, 6, 8 & 9

Cat. No. 5726 — Driver Assembly includes:
18, 19, 20, 21, 22, 23, 24, 25, 26, 27, 28 & 29



	DESCRIPTION	CAT. NO.
1	Stripper Clip	5521
2	Guide Stripper Ring	5538
3	Spring	971694
4	Wave Spring	8155
5	Locking Button	5519
6	Special Pin	5522

	DESCRIPTION	CAT. NO.
7	Guide only	5537
	Guide Unit Assembly	5534
8	Lifter Button	5209
9	Socket Head Cap Screw [M5 x 13.39mm]	5210
10	Socket Head Cap Screw [M5 x 12mm]	6110
11	Lockwasher	2112
12	Key	1862
13	Urethane	2020643
14	Punch Holder	5560
15	Disc Spring	971690
16	Socket Head Cap Screw (2) [M12 x 50mm] [M14 x 50mm] [1/2-13 x 2.000"]	970467 13844 6325
17	Anti-lock Shim	5413
18	Retaining Ring	5747
19	Spring Support	5741
20	Spring Cover	5561
21	Disc Spring (7 required)	5449
22	Adjustment Shaft	5739
23	Wave Spring	971692
24	Punch Driver	5742
25	Spring	972396
26	Adjustment Locking Ball	972420
27	Index Button	5737
28	O-Ring	972430
29	Retaining Ring	972441