

ACTIVE SAFETY

* $F_{1i} =$

Isothermal end force at 100% Cu

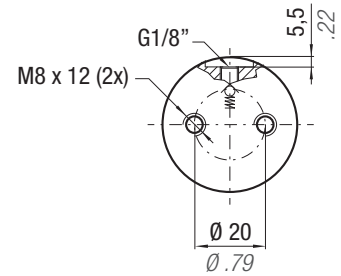
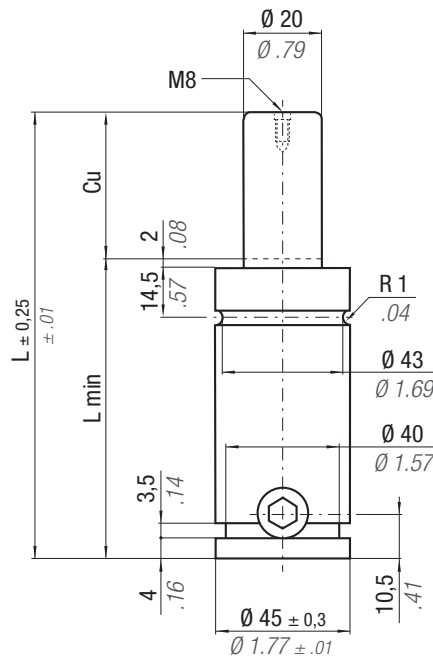


p. 16

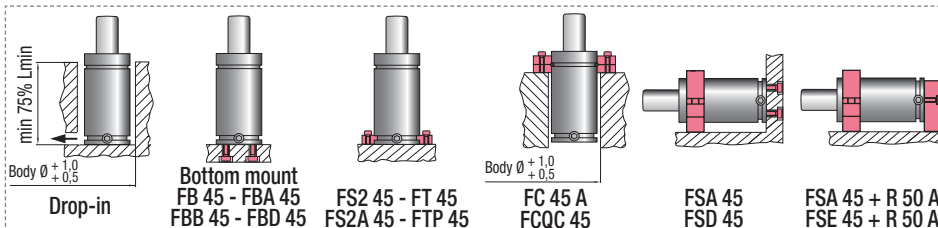


** $F_{1p} =$

Polytropic end force at 100% Cu



CODE	N ₂	°F 32 - 176	°C 0 - 80	ΔP ± 0,33 %/°C	P max 150 bar 2175 psi	P min 20 bar 290 psi	S 3,14 cm ² 0,487 in ²	SPM ~ 40 - 100 (at 20°C)	Max Speed 1,8 m/s	Maintenance kit 39BMS00500A	Cu		L		L min		F ₀ Initial force		F _{1i} * End force *		F _{1p} ** End force **		V ₀		PED 2014/68/EU	
											mm	inch	mm	inch	mm	inch	daN	lb	daN	lb	daN	lb	cm ³	in ³	~Kg	~lb
S 500 - 006 - A											6	0.24	62	2.44	56	2.20	470 ± 5% 150 bar 2175 psi + 20 °C +68 °F	579	1301	648	1457	12,0	0.73	0,54	1.19	✓
S 500 - 013 - A										13	0.51	76	2.99	63	2.48	622		1399	714	1604	20,0	1.22	0,58	1.28	✓	
S 500 - 019 - A										19	0.75	88	3.46	69	2.72	645		1451	749	1683	26,0	1.59	0,62	1.37	✓	
S 500 - 025 - A										25	0.98	100	3.94	75	2.95	660		1485	772	1736	32,0	1.95	0,67	1.48	✓	
S 500 - 038 - A										38	1.50	126	4.96	88	3.46	680		1528	802	1804	45,0	2.75	0,77	1.70	✓	
S 500 - 050 - A										50	1.97	150	5.91	100	3.94	690		1552	819	1840	57,0	3.48	0,85	1.87	✓	
S 500 - 063 - A										63	2.48	176	6.93	113	4.45	669		1505	786	1767	78,0	4.76	0,90	1.98	✓	
S 500 - 080 - A										80	3.15	210	8.27	130	5.12	678		1524	799	1797	96,0	5.86	1,01	2.23	✓	
S 500 - 100 - A										100	3.94	250	9.84	150	5.91	687		1544	813	1828	116,0	7.08	1,16	2.56	✓	
S 500 - 125 - A										125	4.92	300	11.81	175	6.89	694		1561	825	1855	141,0	8.60	1,35	2.98	✓	



HOW TO ORDER

(10 pcs) S 500-050-A
(10 pcs) S 500-050-A-N