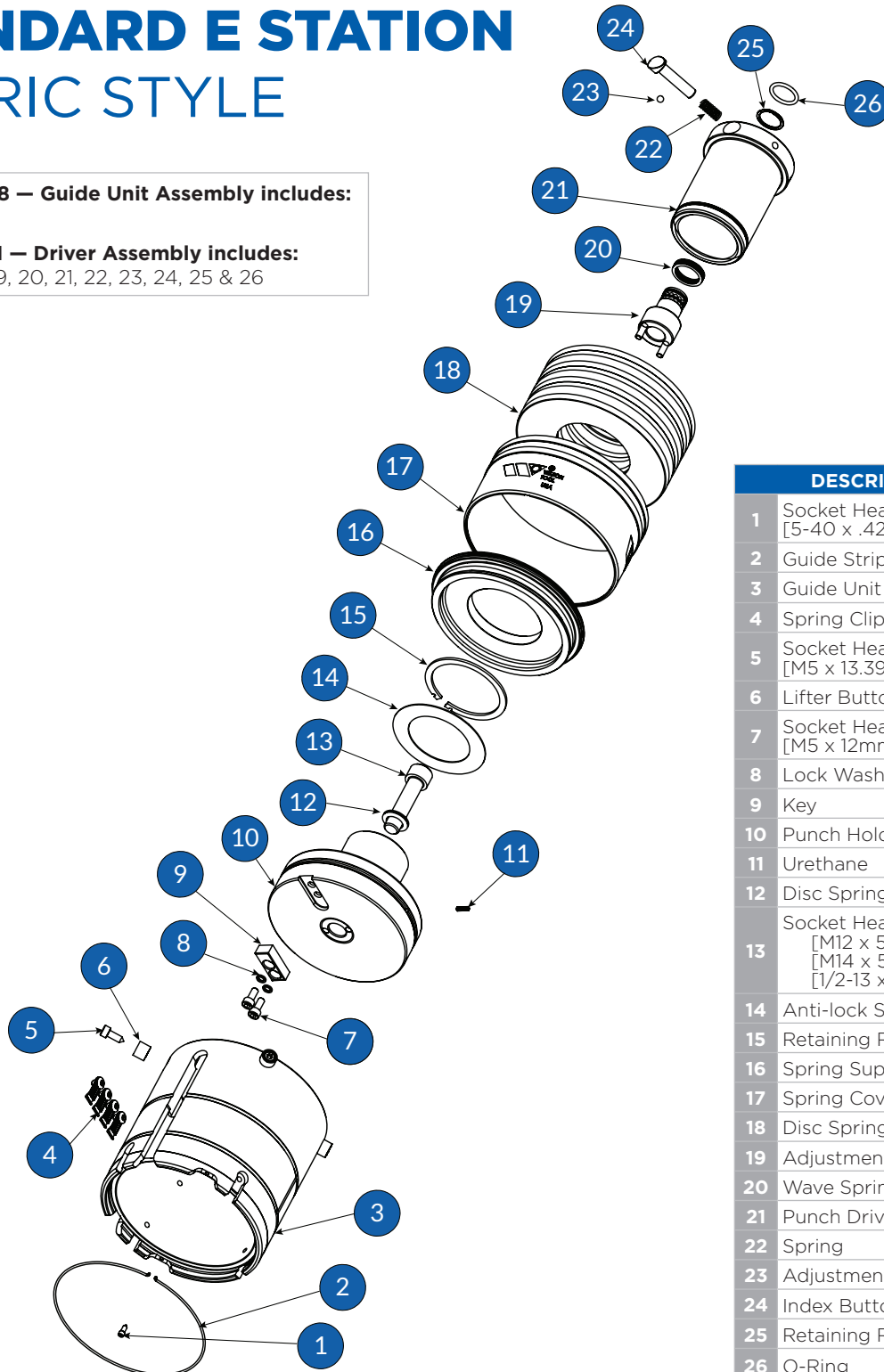


STANDARD E STATION METRIC STYLE

Cat. No. 5438 — Guide Unit Assembly includes:
1, 2, 4, 5 & 6

Cat. No. 5731 — Driver Assembly includes:
15, 16, 17, 18, 19, 20, 21, 22, 23, 24, 25 & 26



	DESCRIPTION	CAT. NO.
1	Socket Head Cap Screw [5-40 x .425"]	429
2	Guide Stripper Ring	5037
3	Guide Unit Assembly	5438
4	Spring Clip (4)	2810
5	Socket Head Cap Screw [M5 x 13.39mm]	5210
6	Lifter Button	5209
7	Socket Head Cap Screw [M5 x 12mm]	6110
8	Lock Washer	2112
9	Key	1862
10	Punch Holder	5560
11	Urethane	2020643
12	Disc Spring	971690
13	Socket Head Cap Screw [M12 x 50mm] [M14 x 50mm] [1/2-13 x 2.000"]	970467 13844 6325
14	Anti-lock Shim	5413
15	Retaining Ring	5747
16	Spring Support	5741
17	Spring Cover	5423
18	Disc Spring (7 required)	5449
19	Adjustment Shaft	5739
20	Wave Spring	971692
21	Punch Driver	5742
22	Spring	972396
23	Adjustment Locking Ball	972420
24	Index Button	5737
25	Retaining Ring	972441
26	O-Ring	972430